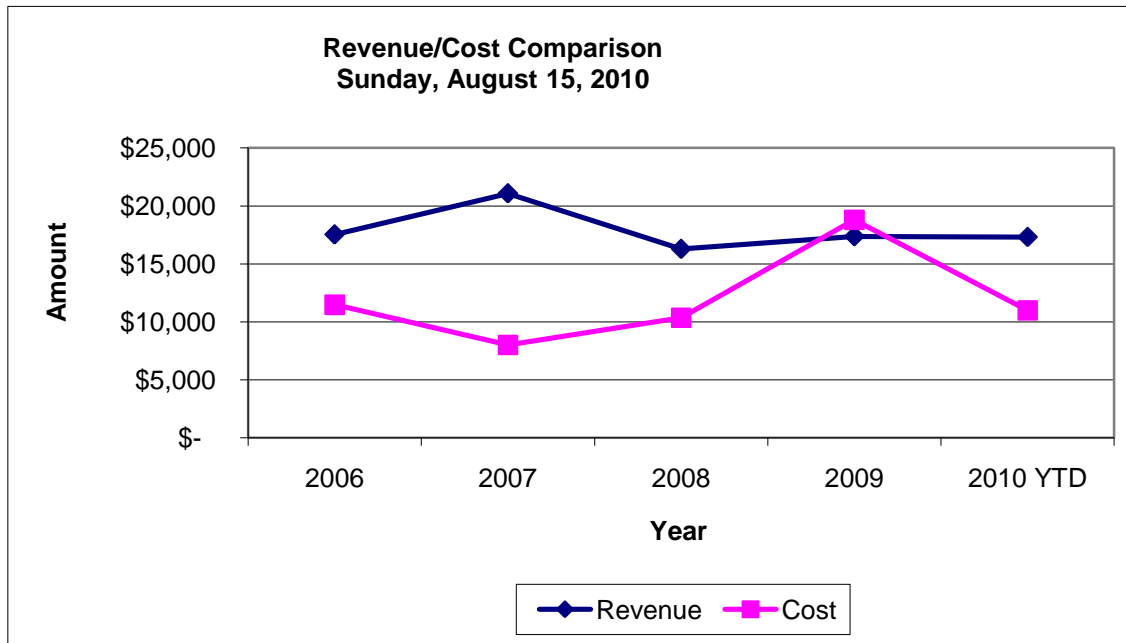


Mid Year Financial Comparisons

Sunday, August 15, 2010

(page 1 of 2)

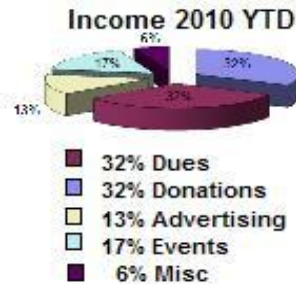
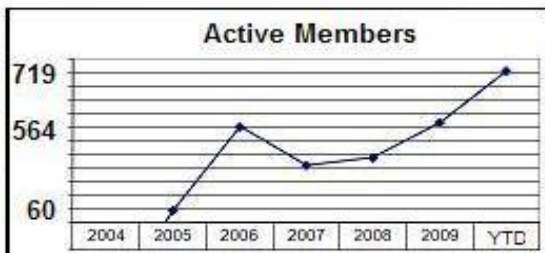
	Liab/Equity	Revenue	Cost
2006	\$23K~	\$ 17,535	\$ 11,476
2007	\$ 28,911.23	\$ 21,079	\$ 8,013
2008	\$ 24,953.93	\$ 16,285	\$ 10,350
2009	\$ 23,407.34	\$ 17,370	\$ 18,800
2010 YTD	\$ 28,211.19	\$ 17,314	\$ 11,000



	Liab/Equity	Revenue	Cost
2006	\$23K~	\$ 17,535	\$ 11,476
2007	\$ 28,911.23	\$ 21,079	\$ 8,013
2008	\$ 24,953.93	\$ 16,285	\$ 10,350
2009	\$ 23,407.34	\$ 17,370	\$ 18,800
2010 YTD	\$ 28,211.19	\$ 17,314	\$ 11,000

Sunday, August 15, 2010

YTD 2010 Expenses	
Merchandise	\$ 550
Maintenance	\$ 6,500
Construction	\$ 2,000
Postage/Printing	\$ 550
Rent	\$ 584
Event Expense	\$ 1,400



Mid Year Financial Comparisons

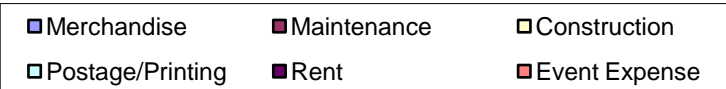
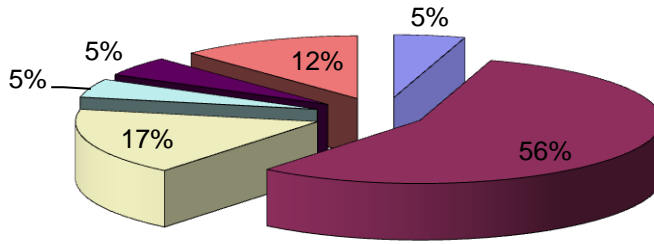
Sunday, August 15, 2010

(page 2 of 2)

YTD 2010 Expenses	
Merchandise	\$ 550
Maintenance	\$ 6,500
Construction	\$ 2,000
Postage/Print	\$ 550
Rent	\$ 584
Event Expense	\$ 1,400

YTD 2010 Income	
Dues	\$ 5,615
Donations	\$ 5,569
Advertising	\$ 2,290
Events	\$ 2,882
Misc	\$ 958

Expenses 2010 YTD
Sunday, August 15, 2010



Income 2010 YTD

Sunday, August 15, 2010

